

Pfizer Vaccine Research and Development

# Innovating for Life-Changing Impact

What does it take to deliver **breakthroughs that change patients' lives** and how does it feel to be part of that?

It takes a powerful combination of first-in-class science, a world-class development and manufacturing network, and great scientific minds, all working together to apply leading-edge technologies, like mRNA, to develop best-in-class vaccines against diseases with high unmet needs. Whether you are a discovery scientist, bacteriologist, virologist, bioprocess development scientist, assay developer, robotics programmer, systems programmer, clinical laboratory scientist, business operations professional, or clinician, you'll find all this and more when you join Pfizer's Vaccine Research and Development organization.

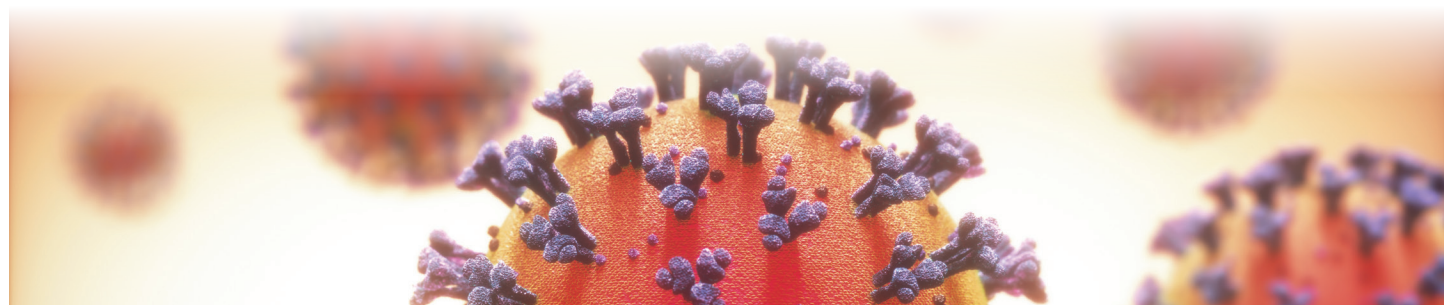
## Next Wave of Vaccine Innovation

Pfizer's Vaccine Research and Development organization has been at the forefront of making history and improving human health – including creating some of the most complex and most sophisticated vaccines in the world, designed to tackle a wide range of infectious diseases of large unmet medical needs in people of all ages:

### PIPELINE DEDICATED TO UNMET NEEDS

Invasive and non-invasive pneumococcal infections	Invasive Group B Streptococcus infections
COVID-19	Meningococcal infections
Respiratory syncytial virus	<i>C. difficile</i> and additional bacterial infections

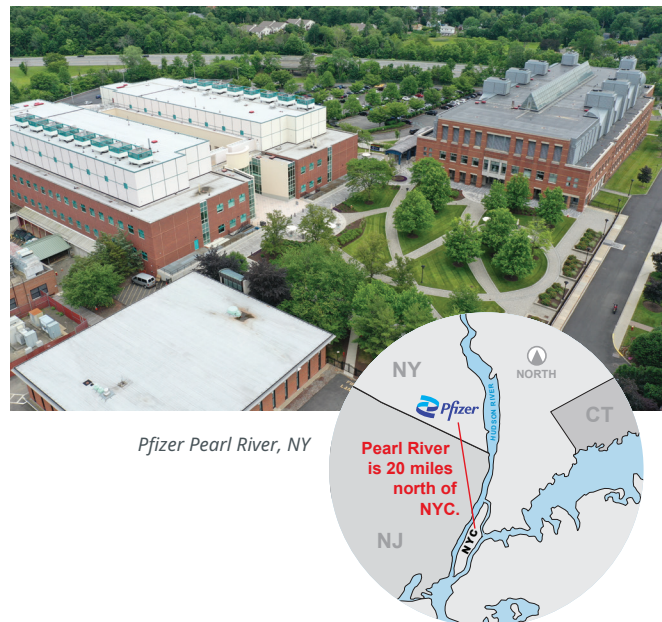
At the same time, we are building on our mRNA leadership and working to develop a mRNA vaccine to prevent flu. But we are not stopping there. We are investing in the facilities and capabilities of the future.



# Innovating for Life-Changing Impact

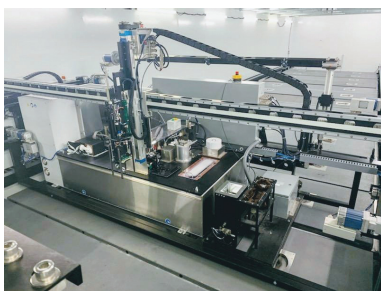
At the heart of Pfizer's scientific innovation in vaccines is our Pearl River site just outside of New York City.

- A center of excellence, our global Vaccine R&D headquarters is a 330-acre facility that is home to over 1000 esteemed colleagues collaborating on vaccine breakthroughs. The site is well into its second century as a New York area innovation center that impacts health care around the world.
- It has long been a magnet for scientists from dozens of countries around the world, and the rich diversity of colleagues at the site continues to be celebrated with a variety of cultural events throughout the year.
- For those colleagues working in Pearl River, there are numerous quality-of-life advantages, including a Lower Hudson Valley location with its many attractions, a location that is less than 45 minutes from New York City.

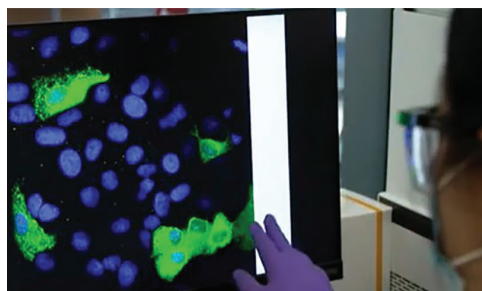


## Investing in Growing Research Capabilities

- A new 2021 state-of-the-art BSL3 laboratory meeting strict NIH and CDC criteria, now online to safely analyze a broad range of pathogens.
- Advanced bioinformatics capabilities enable unsurpassed speed and accuracy in interpreting data.
- A high-capacity sample management system stores and processes millions of clinical trial samples from around the world.



Sample management system



Bioinformatics capabilities



BSL3 laboratory

## Supporting Research Publication

Our leading research facilities at Pfizer continue to attract ambitious and experienced scientists at the forefront of scientific innovation, and our work is frequently published in leading peer-reviewed journals, including *The New England Journal of Medicine*, *The Lancet*, and *Nature*, allowing us to share our scientific knowledge with other researchers around the world.

# Innovating for Life-Changing Impact

At Pfizer Vaccine R&D, pharmaceutical development and innovation are our focus, and our colleagues use the convergence of biology and technology to drive scientific innovation, including being a leader in vaccine R&D, now including new approaches such as mRNA vaccines.



*"It is an exciting time to advance the next wave of vaccine innovation at Pfizer and I have the privilege of leading the most talented team of experts in our industry. We have a strong pipeline of innovative vaccine candidates, and deep expertise across vaccine technologies, including mRNA, polysaccharide conjugation, and recombinant protein technologies. With our longstanding heritage in vaccine innovation and contribution to human health, we are poised to continue delivering breakthroughs for patients."*

**Annaliesa Anderson, PhD, Senior Vice President and Chief Scientific Officer, Vaccine Research & Development**

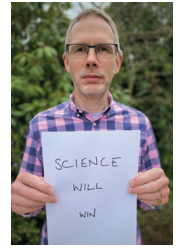
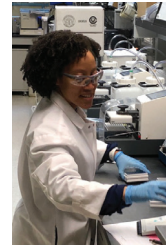
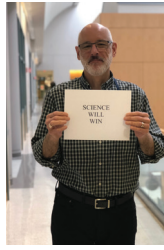
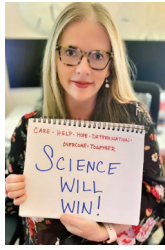
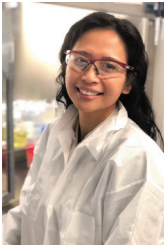


*"I still get excited, like I did when I was a young boy, to discover something new—now with the added value of knowing that vaccines we discover and develop have the potential to improve health for children and adults throughout the world."*

**Bill Gruber, MD, Senior Vice President, Vaccine Clinical R&D**



# Innovating for Life-Changing Impact



## Unleashing the Power of Our People

Pfizer is committed to unleashing the power of our people by offering benefits and programs to help colleagues lead healthier lives and support the moments that matter. For your health and well-being, Pfizer offers comprehensive medical coverage, prescription drug coverage, dental coverage, vision coverage, and flexible spending accounts.

In addition to Pearl River, Vaccine R&D colleagues are located in:

- Collegeville, PA (US)
- Munich, Germany
- Sydney, Australia
- Johannesburg, South Africa
- Hurley, UK
- Brussels, Belgium
- Tokyo, Japan
- Chennai, India

Pfizer offers Healthy Pfizer, a comprehensive wellness program that provides coaching for lifestyle improvement and certain health conditions, as well as access to personalized health tools and resources, including wellness challenges. Prescription drug coverage includes 100 percent coverage for most Pfizer medications dispensed through a pharmacy and two options for prescription drug coverage.

Pfizer offers the option to purchase vacation, should colleagues need time off in addition to allocated vacation, holidays, and personal days; 13 paid holidays (varying by location); and up to three weeks (15 business days) of paid vacation (with additional days at service milestones).

Pfizer provides a variety of educational assistance programs, including reimbursing colleagues up to \$10,000 per calendar year for education-related expenses. Through Pfizer's commuter benefits program, you can use before- and after-tax dollars to pay for your eligible commuting expenses, such as public transportation passes, van pool vouchers and/or parking facilities. Pfizer's Healthy Pfizer living program provides confidential assistance for family caregiving, convenience services, emotional wellness, and financial and legal services, at no cost to you. Pfizer provides generous caregiver leave and parental leave, with up to 10 days of paid caregiver leave, and up to six months of parental leave (including up to 12 weeks of paid non-medical-related leave following the birth or adoption of a child).

Pfizer also offers additional benefits and policies, including a savings plan, adoption and surrogacy program, backup care advantage program, and benefits advantage program (eg, accident insurance, auto and home Insurance, pet insurance, legal services), among many more benefits and policies.



Visit <https://careers.pfizer.com/> to learn more.