



Improving management through genetic testing for Familial Hypercholesterolaemia (FH)

An e-learning programme developed with a panel of FH experts, approved by the International Atherosclerosis Society (IAS), endorsed by the European Association of Preventive Cardiology (EAPC) and accredited by the European Board for Accreditation in Cardiology (EBAC) and the European Accreditation Council for Continuing Medical Education (EACCME) for 1 hour of External CME credits.



**INTERNATIONAL
ATHEROSCLEROSIS
SOCIETY**

Endorsed by



EAPC
European Association
of Preventive Cardiology
 European Society of Cardiology

Learning Objectives

To improve knowledge and understanding amongst cardiologists, lipidologists, genetecists and other relevant HCPs on;

- Key aspects of genetic testing in Familial Hypercholesterolaemia (FH)
- How and why to test
- How to interpret results
- How to treat patients with FH
- How to use cascade screening to identify related individuals at risk.

.

Expert Panel



Alain Carrié, MD,
PhD

Position:

Professor of
Biochemistry and
Molecular Biology
at the Pierre and
Marie Curie
School of
Medicine,
coordinator of
the Center of
Molecular
Genetics at
University
Hospital Pitié
Salpêtrière,
Paris, France



Eric Bruckert, MD

Position:

Director of the
Endocrinology and
Prevention of
Cardiovascular
Disease
Department



Christine Eng, MD

Position:

Professor of
Department of
Molecular and
Human Genetics at
Baylor College of
Medicine and
Chief Medical
Officer and Chief
Quality Officer
of Baylor Miraca
Genetics
Laboratories



Christie M.
Ballantyne, MD

Position: Professor,
Department of
Medicine; Chief,
Section of
Cardiology; Chief,
Section of
Cardiovascular
Research; Baylor
College of Medicine
Director, Center for
Cardiovascular
Disease Prevention;
Houston Methodist
Hospital DeBakey
Heart & Vascular
Center

A multi-media and interactive

Animations

Learning experience

Links to resources

Videos



Quizzes

Case Studies

Case studies

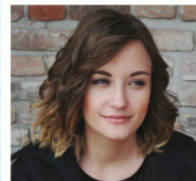
Case studies

The following case studies will take you through some of the most frequently encountered scenarios in FH management; giving you insights into how patients present, how to pursue diagnosis, and how to put an effective treatment plan in place. Select each **photograph** to find out more before continuing.

Physical examination

Family history

- Close family members with history of:
- Elevated LDL-C (above 95th percentile for age)
 - Early MI
 - Early cardiac death
 - Tendon xanthomas or arcus cornealis



Case one: Anna



Case two: Brian



Case three: Diana

Downloadable slides



Available at: www.cor2ed.com

Checkpoint
COR2ED

The results

CREDIBILITY

- Accredited by EACCME and EBAC
- Supported by IAS
- Endorsed by EAPC

ENGAGEMENT

- 3,000 emails opened
- > 800 website page visits
- > 500 social media views

IMPACT

- 130 e-learnings visited
- 103 assessments taken
- 50 slide sets downloaded
- 100% agreement e-learning interesting and valuable
- Visitor agreement very or extremely likely to change clinical practice



Endorsed by

