



Pfizer Inc.
235 East 42nd St.
New York, NY 10017

March 22, 2018

URGENT: Important Prescribing Information Update

Quillivant XR[®] (methylphenidate HCl) for extended-release oral suspension 300 mg, 600 mg, 750 mg and 900 mg Lots

NDC	Strength	Configuration/Count
24478-190-10	300 mg/60 mL total volume	1 Bottle in 1 Carton
24478-200-20	600 mg/120 mL total volume	1 Bottle in 1 Carton
24478-205-25	750 mg/150 mL total volume	1 Bottle in 1 Carton
24478-210-30	900 mg/180 mL total volume	1 Bottle in 1 Carton

Dear Health Care Provider:

In order to alleviate the current drug shortage of **Quillivant XR[®] (methylphenidate HCl) for extended-release oral suspension (300 mg, 600 mg, 750 mg and 900 mg)**, Pfizer is coordinating with the U.S. Food and Drug Administration (FDA) to help ensure availability of the drug. Accordingly, Pfizer is releasing eleven lots (see Table 1(A)) –of Quillivant XR to address the current critical shortage. All of these lots may not meet dissolution test specifications, potentially impacting drug quality and potentially resulting in decreased efficacy. Lots currently on the market within expiry are also potentially impacted (See Table 1(B) – Quillivant XR Marketed Lots). All lots listed in Table 1(A) and Table 1(B) met all other product quality test specifications. Pfizer is issuing this Important Prescribing Information letter to inform health care providers of potential quality/efficacy issues.

Current instructions for use should be followed as directed in the approved labeling.

Health Care Provider Action

Health Care Providers should follow the approved labeling instructions for all lots of Quillivant XR (methylphenidate HCl) for extended-release oral suspension (300 mg, 600 mg, 750 mg and 900 mg).

Reporting Adverse Events

To report adverse reactions, lack of efficacy or quality problems, you should contact Pfizer at 1-800-438-1985 and FDA at www.fda.gov/medwatch, or call 1-800-FDA-1088.

Pfizer Medical Information/Pfizer Customer Service

If you have any medical questions regarding the product, please contact Pfizer Medical Information at 1-800-438-1985 (Mon.-Fri. 8 am-7 pm ET).

For Customer Service, please contact Pfizer Pharmaceutical Customer Service at 1-800-533-4535.

Please see accompanying full Prescribing Information, including **BOXED WARNING**, and Medication Guide for Quillivant XR.

Sincerely,

Pfizer Inc.

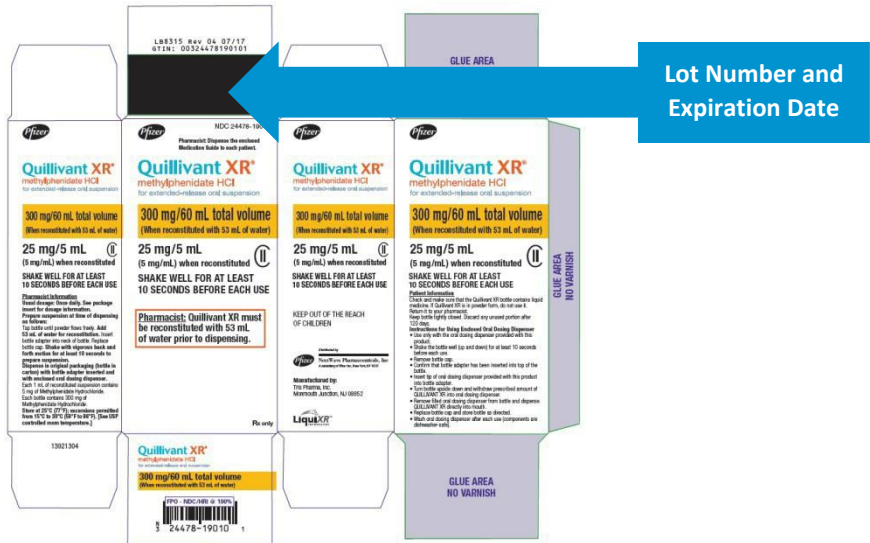
Table 1. Quillivant XR Lots

(A) Quillivant XR – Lots for Future Distribution			
Strength	Lot Number	Expiration Date	NDC
600mg	03217042A	02/2019	24478-200-20
600mg	03217043A	03/2019	24478-200-20
600mg	03217046A	03/2019	24478-200-20
750mg	03217044A	04/2019	24478-205-25
750mg	03217048A	04/2019	24478-205-25
750mg	03217049A	04/2019	24478-205-25
900mg	03217038A	03/2019	24478-210-30
900mg	03217039A	03/2019	24478-210-30
900mg	03217040A	03/2019	24478-210-30
900mg	03217047A	04/2019	24478-210-30
900mg	03217050A	04/2019	24478-210-30
(B) Quillivant XR – Marketed Lots			
Strength	Lot Number	Expiration Date	NDC
300mg	03216052A	05/2018	24478-190-10
300mg	03216066A	08/2018	24478-190-10
300mg	03217008A	11/2018	24478-190-10
300mg	03217027A	02/2019	24478-190-10
600mg	03216042A	03/2018	24478-200-20
600mg	03216043A	03/2018	24478-200-20
600mg	03216049A	04/2018	24478-200-20
600mg	03216056A	05/2018	24478-200-20
600mg	03216058A	06/2018	24478-200-20
600mg	03216059A	06/2018	24478-200-20
600mg	03216060A	06/2018	24478-200-20
600mg	03216062A	05/2018	24478-200-20
600mg	03216067A	08/2018	24478-200-20
600mg	03216068A	08/2018	24478-200-20
600mg	03216070A	08/2018	24478-200-20
600mg	03216071A	08/2018	24478-200-20
600mg	03216074A	08/2018	24478-200-20
600mg	03217001A	10/2018	24478-200-20
600mg	03217004A	10/2018	24478-200-20
600mg	03217005A	10/2018	24478-200-20
600mg	03217011A	11/2018	24478-200-20
600mg	03217012A	11/2018	24478-200-20
600mg	03217013A	12/2018	24478-200-20
600mg	03217015A	12/2018	24478-200-20
600mg	03217021A	01/2019	24478-200-20
Quillivant XR – Marketed Lots cont'd			

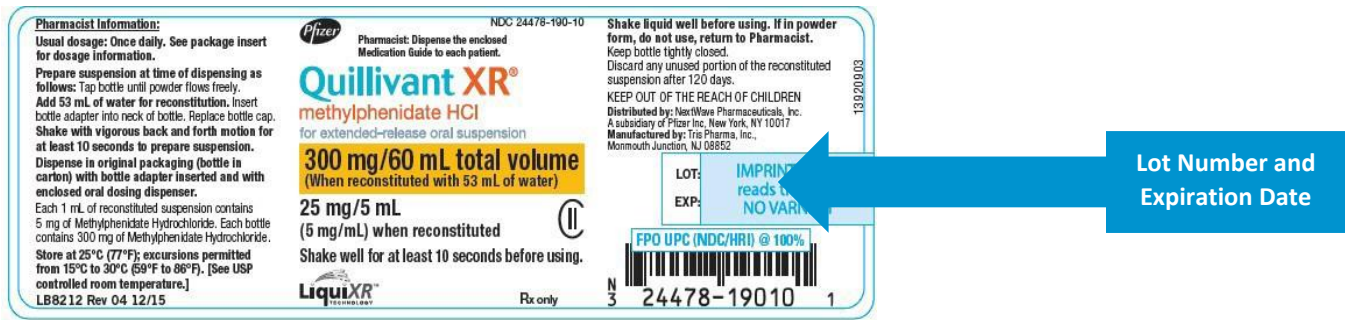
Strength	Lot Number	Expiration Date	NDC
600mg	03217022A	01/2019	24478-200-20
600mg	03217023A	12/2018	24478-200-20
600mg	03217024A	01/2019	24478-200-20
600mg	03217025A	02/2019	24478-200-20
600mg	03217035A	02/2019	24478-200-20
600mg	03217037A	03/2019	24478-200-20
750mg	03216018A	10/2018	24478-205-25
750mg	03216040A	03/2018	24478-205-25
750mg	03216046A	04/2018	24478-205-25
750mg	03216050A	04/2018	24478-205-25
750mg	03216057A	06/2018	24478-205-25
750mg	03216061A	05/2018	24478-205-25
750mg	03216064A	06/2018	24478-205-25
750mg	03216075A	08/2018	24478-205-25
750mg	03216076A	10/2018	24478-205-25
750mg	03216077A	10/2018	24478-205-25
750mg	03216081A	10/2018	24478-205-25
750mg	03216082A	10/2018	24478-205-25
750mg	03217009A	11/2018	24478-205-25
750mg	03217016A	12/2018	24478-205-25
750mg	03217019A	12/2018	24478-205-25
750mg	03217020A	12/2018	24478-205-25
750mg	03217026A	02/2019	24478-205-25
750mg	03217028A	02/2019	24478-205-25
750mg	03217029A	02/2019	24478-205-25
750mg	03217036A	02/2019	24478-205-25
900mg	03216039A	03/2018	24478-210-30
900mg	03216041A	03/2018	24478-210-30
900mg	03216044A	03/2018	24478-210-30
900mg	03216045A	04/2018	24478-210-30
900mg	03216051A	05/2018	24478-210-30
900mg	03216053A	05/2018	24478-210-30
900mg	03216054A	06/2018	24478-210-30
900mg	03216055A	06/2018	24478-210-30
900mg	03216063A	06/2018	24478-210-30
900mg	03216065A	06/2018	24478-210-30
900mg	03216069A	08/2018	24478-210-30
900mg	03216072A	08/2018	24478-210-30
900mg	03216073A	08/2018	24478-210-30
900mg	03216078A	10/2018	24478-210-30
900mg	03216079A	10/2018	24478-210-30

Strength	Lot Number	Expiration Date	NDC
900mg	03216080A	10/2018	24478-210-30
900mg	03217002A	10/2018	24478-210-30
900mg	03217003A	10/2018	24478-210-30
900mg	03217006A	11/2018	24478-210-30
900mg	03217007A	11/2018	24478-210-30
900mg	03217014A	12/2018	24478-210-30
900mg	03217017A	12/2018	24478-210-30
900mg	03217018A	12/2018	24478-210-30
900mg	03217030A	01/2019	24478-210-30
900mg	03217031A	01/2019	24478-210-30
900mg	03217032A	01/2019	24478-210-30
900mg	03217033A	02/2019	24478-210-30
900mg	03217034A	02/2019	24478-210-30

Carton Label



Bottle Label



HIGHLIGHTS OF PRESCRIBING INFORMATION

These highlights do not include all the information needed to use QUILLIVANT XR® safely and effectively. See full prescribing information for QUILLIVANT XR.

QUILLIVANT XR® (methylphenidate hydrochloride) for extended-release oral suspension, CII
Initial U.S. Approval: 1955

WARNING: ABUSE AND DEPENDENCE

See full prescribing information for complete boxed warning.

- CNS stimulants, including QUILLIVANT XR, have a high potential for abuse and dependence (5.1, 9.2, 9.3)
- Assess the risk of abuse prior to prescribing, and monitor for signs of abuse and dependence while on therapy (5.1, 9.2)

RECENT MAJOR CHANGES

Dosage and Administration (2.1, 2.4, 2.6)

6/2017

INDICATIONS AND USAGE

QUILLIVANT XR is a central nervous system (CNS) stimulant indicated for the treatment of Attention Deficit Hyperactivity Disorder (ADHD). (1)

DOSAGE AND ADMINISTRATION

- Before administering the dose, vigorously shake bottle for at least 10 seconds. (2.2)
- May be taken with or without food. (2.3)
- For patients 6 years and above, recommended starting dose is 20 mg given orally once daily in the morning. Dosage may be increased weekly in increments of 10 mg to 20 mg per day. Daily dosage above 60 mg is not recommended. (2.2)
- Reconstitution instructions for the pharmacist: Tap bottle until powder flows freely. Remove bottle cap, add specified amount of water for reconstitution. Insert bottle adapter into neck of bottle. Replace bottle cap. Shake with vigorous back and forth motion for at least 10 seconds to prepare suspension. (2.6)

DOSAGE FORMS AND STRENGTHS

Extended-release oral suspension (after reconstitution with water): 25 mg per 5 mL (5 mg per mL). (3)

CONTRAINDICATIONS

- Known hypersensitivity to methylphenidate or product components. (4.1)
- Concurrent treatment with a monoamine oxidase inhibitor (MAOI), or use of an MAOI within the preceding 14 days. (4.2, 7.1)

WARNINGS AND PRECAUTIONS

- **Serious Cardiovascular Reactions:** Sudden death has been reported in association with CNS stimulants at recommended doses in children and adolescents with structural cardiac abnormalities or other serious heart problems. In adults, sudden death, stroke, and myocardial infarction have been reported. Avoid use in patients with known structural cardiac abnormalities, cardiomyopathy, serious heart arrhythmias, or coronary artery disease. (5.2)
- **Blood Pressure and Heart Rate Increases:** Monitor blood pressure and pulse. Consider the benefits and risks in patients for whom an increase in blood pressure or heart rate would be problematic. (5.3)
- **Psychiatric Adverse Reactions:** Use of CNS stimulants may cause psychotic or manic symptoms in patients with no prior history, or exacerbation of symptoms in patients with pre-existing psychiatric illness. Evaluate for bipolar disorder prior to QUILLIVANT XR use. (5.4)
- **Priapism:** Cases of painful and prolonged penile erections and priapism have been reported with methylphenidate products. Immediate medical attention should be sought if signs or symptoms of prolonged penile erections or priapism are observed. (5.5)
- **Peripheral Vasculopathy, including Raynaud's Phenomenon:** CNS stimulants used to treat ADHD are associated with peripheral vasculopathy, including Raynaud's phenomenon. Careful observation for digital changes is necessary during treatment with ADHD stimulants. (5.6)
- **Long-Term Suppression of Growth:** Monitor height and weight at appropriate intervals in pediatric patients. (5.7)

ADVERSE REACTIONS

Based on accumulated data from other methylphenidate products, the most common (≥5% and twice the rate of placebo) adverse reactions are appetite decreased, insomnia, nausea, vomiting, dyspepsia, abdominal pain, weight decreased, anxiety, dizziness, irritability, affect lability, tachycardia, and blood pressure increased. (6.1)

To report SUSPECTED ADVERSE REACTIONS, contact Pfizer, Inc. at 1-800-438-1985 or FDA at 1-800-FDA-1088 or www.fda.gov/medwatch.

See 17 for PATIENT COUNSELING INFORMATION and Medication Guide.

Revised: 6/2017

FULL PRESCRIBING INFORMATION: CONTENTS*

WARNING: ABUSE AND DEPENDENCE

1 INDICATIONS AND USAGE

2 DOSAGE AND ADMINISTRATION

- 2.1 Pre-treatment Screening
- 2.2 General Dosing Information
- 2.3 Administration Instructions
- 2.4 Switching from other Methylphenidate Products
- 2.5 Dose Reduction and Discontinuation
- 2.6 Reconstitution Instructions for the Pharmacist

3 DOSAGE FORMS AND STRENGTHS

4 CONTRAINDICATIONS

- 4.1 Hypersensitivity to Methylphenidate or other Components of QUILLIVANT XR
- 4.2 Monoamine Oxidase Inhibitors

5 WARNINGS AND PRECAUTIONS

- 5.1 Potential for Abuse and Dependence
- 5.2 Serious Cardiovascular Reactions
- 5.3 Blood Pressure and Heart Rate Increases
- 5.4 Psychiatric Adverse Reactions
- 5.5 Priapism
- 5.6 Peripheral Vasculopathy, including Raynaud's Phenomenon
- 5.7 Long-Term Suppression of Growth

6 ADVERSE REACTIONS

- 6.1 Clinical Trials Experience
- 6.2 Postmarketing Experience

7 DRUG INTERACTIONS

- 7.1 Clinically Important Drug Interactions

8 USE IN SPECIFIC POPULATIONS

- 8.1 Pregnancy
- 8.2 Lactation
- 8.4 Pediatric Use
- 8.5 Geriatric Use

9 DRUG ABUSE AND DEPENDENCE

- 9.1 Controlled Substance
- 9.2 Abuse
- 9.3 Dependence

10 OVERDOSAGE

11 DESCRIPTION

12 CLINICAL PHARMACOLOGY

- 12.1 Mechanism of Action
- 12.2 Pharmacodynamics
- 12.3 Pharmacokinetics

13 NONCLINICAL TOXICOLOGY

- 13.1 Carcinogenesis, Mutagenesis, Impairment of Fertility

14 CLINICAL STUDIES

16 HOW SUPPLIED/STORAGE AND HANDLING

- 16.1 How Supplied
- 16.2 Storage and Handling

17 PATIENT COUNSELING INFORMATION

*Sections or subsections omitted from the full prescribing information are not listed.

FULL PRESCRIBING INFORMATION

WARNING: ABUSE AND DEPENDENCE

CNS stimulants, including QUILLIVANT XR, other methylphenidate-containing products, and amphetamines, have a high potential for abuse and dependence. Assess the risk of abuse prior to prescribing, and monitor for signs of abuse and dependence while on therapy [see *Warnings and Precautions* (5.1), *Drug Abuse and Dependence* (9.2),

1 INDICATIONS AND USAGE

QUILLIVANT XR is indicated for the treatment of Attention Deficit Hyperactivity Disorder (ADHD) [see *Clinical Studies* (14)].

2 DOSAGE AND ADMINISTRATION

2.1 Pre-treatment Screening

Prior to treating children, adolescents, and adults with CNS stimulants including QUILLIVANT XR, assess for the presence of cardiac disease (i.e., perform a careful history, family history of sudden death or ventricular arrhythmia, and physical exam) [see *Warnings and Precautions* (5.2)].

Assess the risk of abuse prior to prescribing, and monitor for signs of abuse and dependence while on therapy. Maintain careful prescription records, educate patients about abuse, monitor for signs of abuse and overdose, and periodically re-evaluate the need for QUILLIVANT XR use [see *Boxed Warning, Warnings and Precautions* (5.1), *Drug Abuse and Dependence* (9)].

2.2 General Dosing Information

Before administering the dose, **VIGOROUSLY SHAKE** the bottle of QUILLIVANT XR for at least 10 seconds, to ensure that the proper dose is administered.

The recommended starting dose of QUILLIVANT XR for patients 6 years and above is 20 mg once daily in the morning. The dose may be titrated weekly in increments of 10 mg to 20 mg. Daily doses above 60 mg have not been studied and are not recommended. As with any CNS stimulant, during titration of QUILLIVANT XR, the prescribed dose should be adjusted, if necessary, until a well-tolerated, therapeutic dose is achieved.

Pharmacologic treatment of ADHD may be needed for extended periods. Health care providers should periodically re-evaluate the long-term use of QUILLIVANT XR, and adjust dosage as needed.

Patients should be advised to avoid alcohol while taking QUILLIVANT XR [see *Clinical Pharmacology* (12.3)].

2.3 Administration Instructions

QUILLIVANT XR should be orally administered once daily in the morning with or without food [see *Clinical Pharmacology* (12.3)].

2.4 Switching from other Methylphenidate Products

If switching from other methylphenidate products, discontinue that treatment, and titrate with QUILLIVANT XR using the above titration schedule.

Do not substitute for other methylphenidate products on a milligram-per-milligram basis, because of different methylphenidate base compositions and differing pharmacokinetic profiles [see *Description* (11), *Clinical Pharmacology* (12.3)].

2.5 Dose Reduction and Discontinuation

If paradoxical aggravation of symptoms or other adverse effects occur, reduce dosage, or, if necessary, discontinue the drug. QUILLIVANT XR should be periodically discontinued to assess the child's condition. If improvement is not observed after appropriate dosage adjustment over a one-month period, the drug should be discontinued.

2.6 Reconstitution Instructions for the Pharmacist

QUILLIVANT XR is supplied as a powder for oral suspension which must be reconstituted with water prior to dispensing. Preparation instructions: Tap bottle until powder flows freely. Remove bottle cap, and add specified amount of water to the bottle (see Table 1 below). Fully insert bottle adapter into neck of bottle [see *Instructions for Use, Figures F and G*]. Replace bottle cap. Shake with vigorous back and forth motion for at least 10 seconds to prepare suspension.

Table 1. Product Reconstitution Instructions

Amount of drug in bottle	Amount of water to add to bottle	Final reconstituted volume (yield)
300 mg	53 mL	60 mL
600 mg	105 mL	120 mL
750 mg	131 mL	150 mL
900 mg	158 mL	180 mL

Store reconstituted QUILLIVANT XR at 25°C (77°F); excursions permitted from 15° to 30°C (59° to 86°F). Dispense in original packaging (bottle in carton) with bottle adapter inserted and with enclosed oral dosing dispenser. QUILLIVANT XR is stable for up to 4 months after reconstitution.

3 DOSAGE FORMS AND STRENGTHS

Extended-release oral suspension (after reconstitution with water): 25 mg per 5 mL (5 mg per mL).

4 CONTRAINDICATIONS

4.1 Hypersensitivity to Methylphenidate or other Components of QUILLIVANT XR

QUILLIVANT XR is contraindicated in patients known to be hypersensitive to methylphenidate, or other components of QUILLIVANT XR. Hypersensitivity reactions such as angioedema and anaphylactic reactions have been reported in patients treated with other methylphenidate products [see *Adverse Reactions* (6.2)].

4.2 Monoamine Oxidase Inhibitors

QUILLIVANT XR is contraindicated during treatment with monoamine oxidase inhibitors (MAOIs), and also within 14 days following discontinuation of treatment with a monoamine oxidase inhibitor (MAOI), because of the risk of hypertensive crisis [see *Drug Interactions* (7.1)].

5 WARNINGS AND PRECAUTIONS

5.1 Potential for Abuse and Dependence

CNS stimulants, including QUILLIVANT XR, other methylphenidate-containing products, and amphetamines, have a high potential for abuse and dependence. Assess the risk of abuse prior to prescribing, and monitor for signs of abuse and dependence while on therapy [see *Drug Abuse and Dependence* (9.2, 9.3)].

5.2 Serious Cardiovascular Reactions

Stroke and myocardial infarction have occurred in adults treated with CNS stimulants at recommended doses. Sudden death has occurred in children and adolescents with structural cardiac abnormalities and other serious cardiac problems, and in adults taking CNS stimulants at recommended doses for ADHD. Avoid use in patients with known structural cardiac abnormalities, cardiomyopathy, serious cardiac arrhythmias, coronary artery disease, or other serious cardiac problems. Further evaluate patients who develop exertional chest pain, unexplained syncope, or arrhythmias during treatment with QUILLIVANT XR.

5.3 Blood Pressure and Heart Rate Increases

CNS stimulants cause an increase in blood pressure (mean increase approximately 2 to 4 mmHg) and heart rate (mean increase approximately 3 to 6 bpm). Individuals may have larger increases. Monitor all patients for hypertension and tachycardia.

5.4 Psychiatric Adverse Reactions

Exacerbation of Pre-Existing Psychosis

CNS stimulants may exacerbate symptoms of behavior disturbance and thought disorder in patients with a pre-existing psychotic disorder.

Induction of a Manic Episode in Patients with Bipolar Disorder

CNS stimulants may induce a manic or mixed episode in patients. Prior to initiating treatment, screen patients for risk factors for developing a manic episode (e.g., comorbid or history of depressive symptoms or a family history of suicide, bipolar disorder, or depression).

New Psychotic or Manic Symptoms

CNS stimulants, at recommended doses, may cause psychotic or manic symptoms (e.g., hallucinations, delusional thinking, or mania) in patients without a prior history of psychotic illness or mania. If such symptoms occur, consider discontinuing QUILLIVANT XR. In a pooled analysis of multiple short-term, placebo-controlled studies of CNS stimulants, psychotic or manic symptoms occurred in approximately 0.1% of CNS stimulant-treated patients, compared to 0 in placebo-treated patients.

5.5 Priapism

Prolonged and painful erections, sometimes requiring surgical intervention, have been reported with methylphenidate products in both pediatric and adult patients. Priapism was not reported with drug initiation but developed after some time on the drug, often subsequent to an increase in dose. Priapism has also appeared during a period of drug withdrawal (drug holidays or during discontinuation). Patients who develop abnormally sustained or frequent and painful erections should seek immediate medical attention.

5.6 Peripheral Vasculopathy, including Raynaud's Phenomenon

CNS stimulants, including QUILLIVANT XR, used to treat ADHD are associated with peripheral vasculopathy, including Raynaud's phenomenon. Signs and symptoms are usually intermittent and mild; however, very rare sequelae include digital ulceration and/or soft tissue breakdown. Effects of peripheral vasculopathy, including Raynaud's phenomenon, were observed in post-marketing reports at different times and at therapeutic doses in all age groups throughout the course of treatment. Signs and symptoms generally improve after reduction in dose or discontinuation of drug. Careful observation of digital changes is necessary during treatment with ADHD stimulants. Further clinical evaluation (e.g., rheumatology referral) may be appropriate for certain patients.

5.7 Long-Term Suppression of Growth

CNS stimulants have been associated with weight loss and slowing of growth rate in pediatric patients. Careful follow-up of weight and height in pediatric patients ages 7 to 10 years who were randomized to either methylphenidate or nonmedication treatment groups over 14 months, as well as in naturalistic subgroups of newly methylphenidate-treated and nonmedication-treated pediatric patients over 36 months (to the ages of 10 to 13 years), suggests that consistently medicated pediatric patients (i.e., treatment for 7 days per week throughout the year) have a temporary slowing in growth rate (on average, a total of about 2 cm less growth in height and 2.7 kg less growth in weight over 3 years), without evidence of growth rebound during this period of development.

Closely monitor growth (weight and height) in pediatric patients treated with CNS stimulants, including QUILLIVANT XR. Patients who are not growing or gaining height or weight as expected may need to have their treatment interrupted.

6 ADVERSE REACTIONS

The following are discussed in more detail in other sections of the labeling:

- Known hypersensitivity to methylphenidate products or other ingredients of QUILLIVANT XR [see *Contraindications* (4)]
- Hypertensive Crisis When Used Concomitantly with Monoamine Oxidase Inhibitors [see *Contraindications* (4), *Drug Interactions* (7.1)]
- Drug Dependence [see *Boxed Warning, Warnings and Precautions* (5.1), *Drug Abuse and Dependence* (9.2, 9.3)]
- Serious Cardiovascular Reactions [see *Warnings and Precautions* (5.2)]
- Blood Pressure and Heart Rate Increases [see *Warnings and Precautions* (5.3)]
- Psychiatric Adverse Reactions [see *Warnings and Precautions* (5.4)]
- Priapism [see *Warnings and Precautions* (5.5)]
- Peripheral Vasculopathy, including Raynaud's phenomenon [see *Warnings and Precautions* (5.6)]
- Long-Term Suppression of Growth [see *Warnings and Precautions* (5.7)]

6.1 Clinical Trials Experience

Because clinical trials are conducted under widely varying conditions, adverse reaction rates observed in the clinical trials of a drug cannot be directly compared to rates in the clinical trials of another drug and may not reflect the rates observed in clinical practice.

Clinical Trials Experience with Other Methylphenidate Products in Children, Adolescents, and Adults with ADHD

Commonly reported ($\geq 2\%$ of the methylphenidate group and at least twice the rate of the placebo group) adverse reactions from placebo-controlled trials of methylphenidate products include: appetite decreased, weight decreased, nausea, abdominal pain, dyspepsia, dry mouth, vomiting, insomnia, anxiety, nervousness, restlessness, affect lability, agitation, irritability, dizziness, vertigo, tremor, blurred vision, blood pressure increased, heart rate increased, tachycardia, palpitations, hyperhidrosis, and pyrexia.

Clinical Trials Experience with QUILLIVANT XR in Children and Adolescents with ADHD

There is limited experience with QUILLIVANT XR in controlled trials. Based on this limited experience, the adverse reaction profile of QUILLIVANT XR appears similar to other methylphenidate extended-release products. The most common ($\geq 2\%$ in the QUILLIVANT XR group and greater than placebo) adverse reactions reported in the Phase 3 controlled study conducted in 45 ADHD patients (ages 6-12 years) were affect lability, excoriation, initial insomnia, tic, decreased appetite, vomiting, motion sickness, eye pain, and rash.

Table 2. Common Adverse Reactions occurring in $\geq 2\%$ of subjects on QUILLIVANT XR and greater than placebo during the controlled cross-over phase

Adverse reaction	QUILLIVANT XR N= 45	Placebo N= 45
Affect lability	9%	2%
Excoriation	4%	0
Initial Insomnia	2%	0
Tic	2%	0
Decreased appetite	2%	0
Vomiting	2%	0
Motion sickness	2%	0
Eye pain	2%	0
Rash	2%	0

6.2 Postmarketing Experience

The following adverse reactions have been identified during post approval use of methylphenidate products. Because these reactions are reported voluntarily from a population of uncertain size, it is not possible to reliably estimate their frequency or establish a causal relationship to drug exposure. These adverse reactions are as follows:

Blood and Lymphatic System Disorders: Pancytopenia, Thrombocytopenia, Thrombocytopenic purpura
Cardiac Disorders: Angina pectoris, Bradycardia, Extrasystole, Supraventricular tachycardia, Ventricular extrasystole

Eye Disorders: Diplopia, Mydriasis, Visual impairment

General Disorders: Chest pain, Chest discomfort, Hyperpyrexia

Hepatobiliary Disorders: Severe hepatocellular injury

Immune System Disorders: Hypersensitivity reactions such as Angioedema, Anaphylactic reactions, Auricular swelling, Bullous conditions, Exfoliative conditions, Urticarias, Pruritus NEC, Rashes, Eruptions, and Exanthemas NEC

Investigations: Alkaline phosphatase increased, Bilirubin increased, Hepatic enzyme increased, Platelet count decreased, White blood cell count abnormal

Musculoskeletal, Connective Tissue and Bone Disorders: Arthralgia, Myalgia, Muscle twitching, Rhabdomyolysis

Nervous System Disorders: Convulsion, Grand mal convulsion, Dyskinesia, Serotonin syndrome in combination with serotonergic drugs

Psychiatric Disorders: Disorientation, Hallucination, Hallucination auditory, Hallucination visual, Libido changes, Mania

Urogenital System: Priapism

Skin and Subcutaneous Tissue Disorders: Alopecia, Erythema

Vascular Disorders: Raynaud's phenomenon

7 DRUG INTERACTIONS

7.1 Clinically Important Drug Interactions

MAO Inhibitors

Do not administer QUILLIVANT XR concomitantly with monoamine oxidase inhibitors (MAOIs) or within 14 days after discontinuing MAOI treatment. Concomitant use of MAOIs and CNS stimulants can cause hypertensive crisis. Potential outcomes include death, stroke, myocardial infarction, aortic dissection, ophthalmological complications, eclampsia, pulmonary edema, and renal failure.

8 USE IN SPECIFIC POPULATIONS

8.1 Pregnancy

Risk Summary

There are limited published studies and small case series that report on the use of methylphenidate in pregnant women; however, the data are insufficient to inform any drug-associated risks. There are clinical considerations [see *Clinical Considerations*]. No teratogenic effects were observed in embryo-fetal development studies with oral administration of methylphenidate to pregnant rats and rabbits during organogenesis at doses 2 and 11 times, respectively, the maximum recommended human dose (MRHD). However, spina bifida was observed in rabbits at a dose 40 times the MRHD [see *Data*].

In the U.S. general population, the estimated background risk of major birth defects and miscarriage in clinically recognized pregnancies is 2-4% and 15-20%, respectively.

Clinical Considerations

Fetal/Neonatal adverse reactions

CNS stimulant medications, such as QUILLIVANT XR, can cause vasoconstriction and thereby decrease placental perfusion. No fetal and/or neonatal adverse reactions have been reported with the use of therapeutic doses of methylphenidate during pregnancy; however, premature delivery and low birth weight infants have been reported in amphetamine-dependent mothers.

Data

Animal Data

In studies conducted in rats and rabbits, methylphenidate was administered orally at doses of up to 75 and 200 mg/kg/day, respectively, during the period of organogenesis. Teratogenic effects (increased incidence of fetal spina bifida) were observed in rabbits at the highest dose, which is approximately 40 times the maximum recommended human dose (MRHD) on a mg/m² basis. The no effect level for embryo-fetal development in rabbits was 60 mg/kg/day (11 times the MRHD on a mg/m² basis). There was no evidence of specific teratogenic activity in rats, although increased incidences of fetal skeletal variations were seen at the highest dose level (7 times the MRHD on a mg/m² basis), which was also maternally toxic. The no effect level for embryo-fetal development in rats was 25 mg/kg/day (2 times the MRHD on a mg/m² basis).

8.2 Lactation

Risk Summary

Limited published literature reports that methylphenidate is present in human milk, which resulted in infant doses of 0.16% to 0.7% of the maternal weight-adjusted dosage and a milk/plasma ratio ranging between 1.1 and 2.7. There are no reports of adverse effects on the breastfed infant and no effects on milk production. Long-term neurodevelopmental effects on infants from CNS stimulant exposure are unknown. The developmental and health benefits of breastfeeding should be considered along with the mother's clinical need for QUILLIVANT XR and any potential adverse effects on the breastfed infant from QUILLIVANT XR or from the underlying maternal condition.

Clinical Considerations

Monitor breastfed infants for adverse reactions, such as agitation, insomnia, anorexia, and reduced weight gain.

8.4 Pediatric Use

The safety and effectiveness of QUILLIVANT XR have been established in pediatric patients ages 6 to 17 years. Use of QUILLIVANT XR in pediatric patients 6 to 12 years of age is supported by one adequate and well-controlled study [see *Clinical Studies (14)*]. Use in 12 to 17 year olds is supported by the adequate and well-controlled studies of QUILLIVANT XR in younger pediatric

patients and additional pharmacokinetic data in adolescents, along with safety information from other methylphenidate-containing products. The long-term efficacy of methylphenidate in pediatric patients has not been established. Safety and efficacy in pediatric patients below the age of 6 years have not been established.

Long Term Suppression of Growth

Growth should be monitored during treatment with CNS stimulants, including QUILLIVANT XR. Children who are not growing or gaining weight as expected may need to have their treatment interrupted [see *Warnings and Precautions (5.7)*].

Juvenile Animal Data

Rats treated with methylphenidate early in the postnatal period through sexual maturation demonstrated a decrease in spontaneous locomotor activity in adulthood. A deficit in acquisition of a specific learning task was observed in females only. The doses at which these findings were observed are at least 6 times the maximum recommended human dose (MRHD) on a mg/m² basis.

In the study conducted in young rats, methylphenidate was administered orally at doses of up to 100 mg/kg/day for 9 weeks, starting early in the postnatal period (postnatal day 7) and continuing through sexual maturity (postnatal week 10). When these animals were tested as adults (postnatal weeks 13-14), decreased spontaneous locomotor activity was observed in males and females previously treated with 50 mg/kg/day (approximately 6 times the maximum recommended human dose [MRHD] on a mg/m² basis) or greater, and a deficit in the acquisition of a specific learning task was observed in females exposed to the highest dose (12 times the MRHD on a mg/m² basis). The no effect level for juvenile neurobehavioral development in rats was 5 mg/kg/day (half the MRHD on a mg/m² basis). The clinical significance of the long-term behavioral effects observed in rats is unknown.

8.5 Geriatric Use

QUILLIVANT XR has not been studied in patients over the age of 65 years.

9 DRUG ABUSE AND DEPENDENCE

9.1 Controlled Substance

QUILLIVANT XR contains methylphenidate, a Schedule II controlled substance.

9.2 Abuse

CNS stimulants including QUILLIVANT XR, other methylphenidate-containing products, and amphetamines have a high potential for abuse. Abuse is characterized by impaired control over drug use, compulsive use, continued use despite harm, and craving.

Signs and symptoms of CNS stimulant abuse include increased heart rate, respiratory rate, blood pressure, and/or sweating, dilated pupils, hyperactivity, restlessness, insomnia, decreased appetite, loss of coordination, tremors, flushed skin, vomiting, and/or abdominal pain. Anxiety, psychosis, hostility, aggression, suicidal or homicidal ideation have also been observed. Abusers of CNS stimulants may chew, snort, inject, or use other unapproved routes of administration which can result in overdose and death [see *Overdosage (10)*].

To reduce the abuse of CNS stimulants including QUILLIVANT XR, assess the risk of abuse prior to prescribing. After prescribing, keep careful prescription records, educate patients and their families about abuse and on proper storage and disposal of CNS stimulants, monitor for signs of abuse while on therapy, and re-evaluate the need for QUILLIVANT XR use.

9.3 Dependence

Tolerance

Tolerance (a state of adaptation in which exposure to a drug results in a reduction of the drug's desired and/or undesired effects over time) can occur during chronic therapy with CNS stimulants including QUILLIVANT XR.

Dependence

Physical dependence (a state of adaptation manifested by a withdrawal syndrome produced by abrupt cessation, rapid dose reduction, or administration of an antagonist) can occur in patients treated with CNS stimulants including QUILLIVANT XR. Withdrawal symptoms after abrupt cessation following prolonged high-dosage administration of CNS stimulants include dysphoric mood; fatigue; vivid, unpleasant dreams; insomnia or hypersomnia; increased appetite; and psychomotor retardation or agitation.

10 OVERDOSAGE

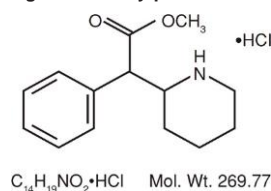
Consult with a Certified Poison Control Center (1-800-222-1222) for up-to-date guidance and advice on the management of overdose with methylphenidate. Signs and symptoms of acute methylphenidate overdose, resulting principally from overstimulation of the CNS and from excessive sympathomimetic effects, may include the following: nausea, vomiting, diarrhea, restlessness, anxiety, agitation, tremors, hyperreflexia, muscle twitching, convulsions (may be followed by coma), euphoria, confusion, hallucinations, delirium, sweating, flushing, headache, hyperpyrexia, tachycardia, palpitations, cardiac arrhythmias, hypertension, hypotension, tachypnea, mydriasis, dryness of mucous membranes, and rhabdomyolysis.

11 DESCRIPTION

QUILLIVANT XR is a powder that, after reconstitution with water, forms an extended-release oral suspension formulation of methylphenidate intended for once daily oral administration. QUILLIVANT XR contains approximately 20% immediate-release and 80% extended-release methylphenidate. After reconstitution, QUILLIVANT XR is available in a 25 mg per 5 mL (5 mg per mL) extended-release oral suspension.

Methylphenidate HCl is a central nervous system (CNS) stimulant. The chemical name is methyl α -phenyl-2-piperidineacetate hydrochloride, and its structural formula is shown in Figure 1.

Figure 1. Methylphenidate HCl structure



Methylphenidate HCl is a white, odorless crystalline powder. Its solutions are acid to litmus. It is freely soluble in water and in methanol, soluble in alcohol, and slightly soluble in chloroform and in acetone.

QUILLIVANT XR also contains the following inactive ingredients: sodium polystyrene sulfonate, povidone, triacetin, polyvinyl acetate, sucrose, anhydrous trisodium citrate, anhydrous citric acid, sodium benzoate, sucralose, poloxamer 188, corn starch, xanthan gum, talc, banana flavor, and silicon dioxide.

12 CLINICAL PHARMACOLOGY

12.1 Mechanism of Action

Methylphenidate HCl is a central nervous system (CNS) stimulant.

12.2 Pharmacodynamics

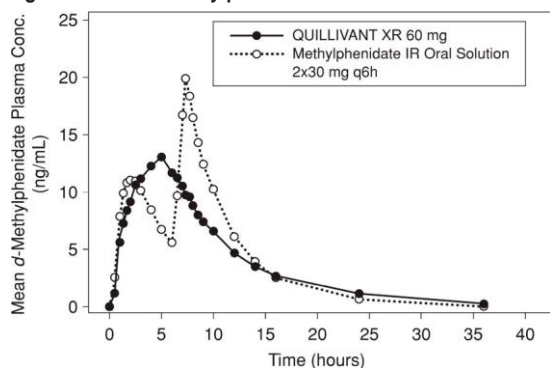
Methylphenidate is a racemic mixture comprised of the *d*- and *l*-isomers. The *d*-isomer is more pharmacologically active than the *l*-isomer. The mode of therapeutic action in ADHD is not known. Methylphenidate blocks the reuptake of norepinephrine and dopamine into the presynaptic neuron and increases the release of these monoamines into the extraneuronal space.

12.3 Pharmacokinetics

Absorption

Following a single, 60 mg oral dose of QUILLIVANT XR in 28 healthy adult subjects in a crossover study under fasting conditions, *d*-methylphenidate (*d*-MPH) mean (\pm SD) peak plasma concentrations of 13.6 (\pm 5.8) ng/mL occurred at a median time of 5.0 hours after dosing (Figure 2). The relative bioavailability of QUILLIVANT XR compared to Methylphenidate IR oral solution (2x30 mg, q6h) is 95%.

Figure 2. Mean *d*-Methylphenidate Plasma Concentration-Time Profiles



The single dose pharmacokinetics of *d*-MPH under fed conditions are summarized (Table 3) from studies in children and adolescents with ADHD, and healthy adults following an oral dose of 60 mg QUILLIVANT XR.

Table 3. *d*-MPH PK Parameters (mean \pm SD) after 60 mg oral dosing of QUILLIVANT XR*

PK Parameter	Children [†] (n=3)	Adolescent [†] (n=4)	Adult (n=27)
T _{max} (hr) [‡]	4.05 (3.98-6.0)	2.0 (1.98-4.0)	4.0 (1.3-7.3)
T _{1/2} (hr)	5.2 \pm 0.1	5.0 \pm 0.2	5.2 \pm 1.0
C _{max} (ng/mL)	34.4 \pm 14.0	21.1 \pm 5.9	17.0 \pm 7.7
AUC _{inf} (hr \cdot ng/mL)	378 \pm 175	178 \pm 54.2	163.2 \pm 80.3
Cl (L/hr/kg)	4.27 \pm 0.70	5.06 \pm 1.42	5.66 \pm 2.15

* Breakfast was given 30 min prior to drug administration

[†] Total MPH measured in children (9-12 years old) and adolescents (13-15 years old), *l*-MPH <2% of *d*-MPH in circulation

[‡] Data presented as median (range)

Food Effects

In a study in adult volunteers to investigate the effects of a high-fat meal on the bioavailability of QUILLIVANT XR at a dose of 60 mg, the presence of food reduced the time to peak concentration by approximately 1 hour (fed: 4 hours vs. fasted: 5 hours). Overall, a high-fat meal increased the average C_{max} of QUILLIVANT XR by about 28% and the AUC by about 19%. These changes are not considered clinically significant.

Elimination

Following a single 60 mg oral dose of QUILLIVANT XR in 28 healthy adult subjects under fasting conditions, the mean plasma terminal elimination half-life of *d*-methylphenidate was 5.6 (\pm 0.8) hours.

Metabolism

In humans, methylphenidate is metabolized primarily via deesterification to alpha-phenyl-piperidine acetic acid (PPAA). The metabolite has little or no pharmacologic activity.

Excretion

After oral dosing of radiolabeled methylphenidate in humans, about 90% of the radioactivity was recovered in urine. The main urinary metabolite was PPAA, accounting for approximately 80% of the dose.

Alcohol Effect

An *in vitro* study was conducted to explore the effect of alcohol on the release characteristics of methylphenidate from QUILLIVANT XR Oral Suspension. At alcohol concentrations of 5% and 10%, there was no effect of alcohol on the release characteristics of methylphenidate. At 20% alcohol concentration, there was on average a 20% increase in drug exposure [see Dosage and Administration (2.2)].

Specific Populations

Sex

There is insufficient experience with the use of QUILLIVANT XR to detect gender variations in pharmacokinetics.

Race

There is insufficient experience with the use of QUILLIVANT XR to detect ethnic variations in pharmacokinetics.

Age

The pharmacokinetics of methylphenidate after QUILLIVANT XR administration were studied in pediatric patients with ADHD between 9 and 15 years of age. After a single oral dose of 60 mg QUILLIVANT XR, plasma concentrations of methylphenidate in children (9-12 years old; n=3) were approximately twice the concentrations observed in adults. The plasma concentrations in adolescent patients (13-15 years old; n=4) were similar to those in adults.

Renal Impairment

There is no experience with the use of QUILLIVANT XR in patients with renal insufficiency. After oral administration of radiolabeled methylphenidate in humans, methylphenidate was extensively metabolized and approximately 80% of the radioactivity was excreted in the urine in the form of PPAA. Since renal clearance is not an important route of methylphenidate clearance, renal insufficiency is expected to have little effect on the pharmacokinetics of QUILLIVANT XR.

Hepatic Impairment

There is no experience with the use of QUILLIVANT XR in patients with hepatic insufficiency.

13 NONCLINICAL TOXICOLOGY

13.1 Carcinogenesis, Mutagenesis, Impairment of Fertility

Carcinogenesis

In a lifetime carcinogenicity study carried out in B6C3F1 mice, methylphenidate caused an increase in hepatocellular adenomas and, in males only, an increase in hepatoblastomas, at a daily dose of approximately 60 mg/kg/day. This dose is approximately 4 times the maximum recommended human dose on a mg/m² basis. Hepatoblastoma is a relatively rare rodent malignant tumor type. There was no increase in total malignant hepatic tumors. The mouse strain used is sensitive to the development of hepatic tumors, and the significance of these results to humans is unknown.

Methylphenidate did not cause any increase in tumors in a lifetime carcinogenicity study carried out in F344 rats; the highest dose used was approximately 45 mg/kg/day, which is approximately 5 times the maximum recommended human dose on a mg/m² basis.

Mutagenesis

Methylphenidate was not mutagenic in the *in vitro* Ames reverse mutation assay or in the *in vitro* mouse lymphoma cell forward mutation assay. Sister chromatid exchanges and chromosome aberrations were increased, indicative of a weak clastogenic response, in an *in vitro* assay in cultured Chinese Hamster Ovary (CHO) cells. Methylphenidate was negative in an *in vivo* mouse bone marrow micronucleus assay.

Impairment of Fertility

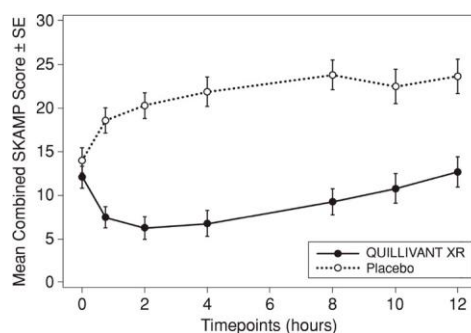
Methylphenidate did not impair fertility in male or female mice that were fed diets containing the drug in an 18-week Continuous Breeding study. The study was conducted at doses of up to 160 mg/kg/day, approximately 8-fold the maximum recommended human dose on a mg/m² basis.

14 CLINICAL STUDIES

The efficacy of QUILLIVANT XR was evaluated in a laboratory classroom study conducted in 45 pediatric patients (ages 6 to 12 years) with ADHD. Patients in the trial met Diagnostic and Statistical Manual of Mental Diseases, 4th edition (DSM-IV[®]) criteria for ADHD. The study began with an open-label dose optimization period (4 to 6 weeks) with an initial QUILLIVANT XR dose of 20 mg once daily in the morning. The dose could be titrated weekly in increments of 10 or 20 mg until a therapeutic dose or the maximum dose of 60 mg/day was reached. At the end of the dose optimization period, approximately 5% of subjects were receiving 20 mg/day; 39%, 30 mg/day; 31%, 40 mg/day; 10%, 50 mg/day; and 15%, 60 mg/day. Subjects then entered a 2-week randomized, double-blind, crossover treatment with the individually optimized dose of QUILLIVANT XR or placebo. At the end of each week, school teachers and raters evaluated the attention and behavior of the subjects in a laboratory classroom using the Swanson, Kotkin, Agler, M-Flynn, and Pelham (SKAMP) rating scale. The primary efficacy endpoint was the SKAMP-Combined score at 4 hours post-dosing. The key secondary efficacy endpoints were the SKAMP-Combined scores at 0.75, 2, 8, 10, and 12 hours post-dosing.

Results from the first double-blind, placebo-controlled week of the study are summarized in Figure 3. SKAMP-Combined scores were statistically significantly lower (improved) at all time points (0.75, 2, 4, 8, 10, 12 hours) post-dosing with QUILLIVANT XR compared to placebo.

Figure 3. Absolute SKAMP-Combined Score after treatment with QUILLIVANT XR or Placebo during Period 1.



16 HOW SUPPLIED/STORAGE AND HANDLING

16.1 How Supplied

QUILLIVANT XR is supplied as powder that, after reconstitution with water, forms an extended-release oral suspension. The product is supplied in a carton. Each carton also contains one bottle, one oral dosing dispenser, and one bottle adapter.

The product must be reconstituted only by the pharmacist and not by the patient or caregiver. After reconstitution, the product is a light beige to tan viscous suspension containing 25 mg per 5 mL (5 mg per mL) of methylphenidate hydrochloride.

Bottles of 300 mg powder (to prepare 60 mL suspension).....	NDC 24478-190-10
Bottles of 600 mg powder (to prepare 120 mL suspension).....	NDC 24478-200-20
Bottles of 750 mg powder (to prepare 150 mL suspension).....	NDC 24478-205-25
Bottles of 900 mg powder (to prepare 180 mL suspension).....	NDC 24478-210-30

16.2 Storage and Handling

Store at 25°C (77°F); excursions permitted from 15°C to 30°C (59°F to 86°F). [see USP Controlled Room Temperature.]

Dispense in original container.

Disposal

Comply with local laws and regulations on drug disposal of CNS stimulants. Dispose of remaining, unused, or expired QUILLIVANT XR by a medicine take-back program or by an authorized collector registered with the Drug Enforcement Administration. If no take-back program or authorized collector is available, mix QUILLIVANT XR with an undesirable, nontoxic substance to make it less appealing to children and pets. Place the mixture in a container such as a sealed plastic bag and discard QUILLIVANT XR in the household trash.

17 PATIENT COUNSELING INFORMATION

Advise patients to read the FDA-approved patient labeling (Medication Guide and Instructions for Use).

Controlled Substance Status/Potential for Abuse and Dependence

Advise patients and their caregivers that QUILLIVANT XR is a federally controlled substance, and it can be abused and lead to dependence [see *Drug Abuse and Dependence* (9.1, 9.2, 9.3)]. Instruct patients that they should not give QUILLIVANT XR to anyone else. Advise patients to store QUILLIVANT XR in a safe place, preferably locked, to prevent abuse. Advise patients to comply with laws and regulations on drug disposal. Advise patients to dispose of remaining, unused, or expired QUILLIVANT XR through a medicine take-back program if available [see *Warnings and Precautions* (5.1), *Abuse and Dependence* (9.2, 9.3)].

Instructions for Using the Enclosed Oral Dosing Dispenser

Provide the following instructions on administration to the patient or caregiver:

- The pharmacist should provide this medicine in its original packaging (bottle within carton) with the bottle adapter fully inserted and the accompanying oral dosing dispenser. Use only with the oral dosing dispenser provided with this product.
- Check and make sure that the QUILLIVANT XR bottle contains liquid medicine. If QUILLIVANT XR is in powder form, do not use it. Return it to your pharmacist.
- **VIGOROUSLY SHAKE** the bottle of QUILLIVANT XR for at least 10 seconds before each dose, to ensure that the proper dose is administered.
- Remove the bottle cap. Confirm that the bottle adapter has been inserted into top of the bottle.
- Insert the tip of the oral dosing dispenser provided with this product into the bottle adapter.
- Turn bottle upside down and withdraw prescribed amount of QUILLIVANT XR into the oral dosing dispenser.
- Remove filled oral dosing dispenser from bottle and dispense QUILLIVANT XR directly into mouth.
- Replace bottle cap and store bottle as directed.
- Wash oral dosing dispenser after each use (components are dishwasher-safe).

Serious Cardiovascular Risks

Advise patients, caregivers, and family members that there is a potential for serious cardiovascular risks including sudden death, myocardial infarction, and stroke with QUILLIVANT XR use. Instruct patients to contact a health care provider immediately if they develop symptoms such as exertional chest pain, unexplained syncope, or other symptoms suggestive of cardiac disease [see *Warnings and Precautions* (5.2)].

Blood Pressure and Heart Rate Increases

Advise patients that QUILLIVANT XR can elevate blood pressure and heart rate [see *Warnings and Precautions* (5.3)].

Psychiatric Risks

Advise patients that QUILLIVANT XR, at recommended doses, can cause psychotic or manic symptoms, even in patients without a prior history of psychotic symptoms or mania [see *Warnings and Precautions* (5.4)].

Priapism

Advise patients, caregivers, and family members of the possibility of painful or prolonged penile erections (priapism). **Instruct the patient to seek immediate medical attention in the event of priapism** [see *Warnings and Precautions* (5.5)].

Circulation Problems in Fingers and Toes [Peripheral Vasculopathy, including Raynaud's Phenomenon]

- Instruct patients beginning treatment with QUILLIVANT XR about the risk of peripheral vasculopathy, including Raynaud's phenomenon, and associated signs and symptoms: fingers or toes may feel numb, cool, painful, and/or may change color from pale, to blue, to red.
- Instruct patients to report to their physician any new numbness, pain, skin color change, or sensitivity to temperature in fingers or toes.
- **Instruct patients to call their physician immediately with any signs of unexplained wounds appearing on fingers or toes while taking QUILLIVANT XR.**
- Further clinical evaluation (e.g., rheumatology referral) may be appropriate for certain patients.

Suppression of Growth

Advise patients, families, and caregivers that QUILLIVANT XR can cause slowing of growth and weight loss [see *Warnings and Precautions* (5.7)].

Alcohol Effect

Patients should be advised to avoid alcohol while taking QUILLIVANT XR Oral Suspension. Consumption of alcohol while taking QUILLIVANT XR may result in a more rapid release of the dose of methylphenidate [see *Clinical Pharmacology* (12.3)].

This product's label may have been updated. For current full prescribing information, please visit www.pfizer.com.



Distributed by

NextWave Pharmaceuticals, Inc

A subsidiary of Pfizer Inc, New York, NY 10017

Manufactured by:

TrisPharma, Inc., Monmouth Junction, NJ 08852
LAB-0656-12.0

Medication Guide
QUILLIVANT XR® (kwil-ə-vantl)
(methylphenidate hydrochloride)
for extended-release oral suspension CII

What is the most important information I should know about QUILLIVANT XR?

QUILLIVANT XR is a federally controlled substance (CII) because it can be abused or lead to dependence. Keep QUILLIVANT XR in a safe place to prevent misuse and abuse. Selling or giving away QUILLIVANT XR may harm others, and is against the law.

Tell your health care provider if you or your child have (or have a family history of) ever abused or been dependent on alcohol, prescription medicines or street drugs.

The following have been reported with use of methylphenidate hydrochloride and other stimulant medicines.

1. Heart-related problems:

- sudden death in patients who have heart problems or heart defects
- stroke and heart attack in adults
- increased blood pressure and heart rate

Tell your health care provider if you or your child have any heart problems, heart defects, high blood pressure, or a family history of these problems.

Your health care provider should check you or your child carefully for heart problems before starting QUILLIVANT XR.

Your health care provider should check your or your child's blood pressure and heart rate regularly during treatment with QUILLIVANT XR.

Call your health care provider right away if you or your child has any signs of heart problems such as chest pain, shortness of breath, or fainting while taking QUILLIVANT XR.

2. Mental (Psychiatric) problems:

- new or worse behavior and thought problems
- new or worse bipolar illness
- new psychotic symptoms (such as hearing voices, believing things that are not true, are suspicious) or new manic symptoms

Tell your health care provider about any mental problems you or your child have, or about a family history of suicide, bipolar illness, or depression.

Call your health care provider right away if you or your child have any new or worsening mental symptoms or problems while taking QUILLIVANT XR, especially seeing or hearing things that are not real, believing things that are not real, or are suspicious.

3. Circulation problems in fingers and toes [Peripheral vasculopathy, including Raynaud's phenomenon]:

- Fingers or toes may feel numb, cool, painful
- Fingers or toes may change color from pale, to blue, to red

Tell your health care provider if you have or your child has numbness, pain, skin color change, or sensitivity to temperature in the fingers or toes.

Call your health care provider right away if you have or your child has any signs of unexplained wounds appearing on fingers or toes while taking QUILLIVANT XR.

What is QUILLIVANT XR?

QUILLIVANT XR is a central nervous system stimulant prescription medicine. **QUILLIVANT XR is a liquid medicine** that you take by mouth.

It is used for the treatment of Attention Deficit Hyperactivity Disorder (ADHD). QUILLIVANT XR may help increase attention and decrease impulsiveness and hyperactivity in people with ADHD.

It is not known if QUILLIVANT XR is safe and effective in children under 6 years of age.

Do not take QUILLIVANT XR if you or your child:

- are allergic to methylphenidate hydrochloride, or any of the ingredients in QUILLIVANT XR. See the end of this Medication Guide for a complete list of ingredients in QUILLIVANT XR.
- are taking or have taken within the past 14 days a type of anti-depression medicine called a monoamine oxidase inhibitor (MAOI).

QUILLIVANT XR may not be right for you or your child. Before starting QUILLIVANT XR tell your or your child's health care provider about all health conditions (or a family history of) including:

- heart problems, heart defects, high blood pressure
- mental problems including psychosis, mania, bipolar illness, or depression
- circulation problems in fingers and toes
- if you are pregnant or plan to become pregnant. It is not known if QUILLIVANT XR will harm your unborn baby. Talk to your health care provider if you are pregnant or plan to become pregnant.
- if you are breastfeeding or plan to breast feed. QUILLIVANT XR passes into your breast milk. You and your doctor should decide if you will take QUILLIVANT XR or breast feed.

Tell your health care provider about all of the medicines that you or your child take including prescription and nonprescription medicines, vitamins, and herbal supplements. QUILLIVANT XR and some medicines may interact with each other and cause serious side effects. Sometimes the doses of other medicines will need to be adjusted while taking QUILLIVANT XR.

Your health care provider will decide whether QUILLIVANT XR can be taken with other medicines.

Especially tell your health care provider if you or your child takes:

- anti-depression medicines including MAOIs

Know the medicines that you or your child takes. Keep a list of your medicines with you to show your health care provider and pharmacist.

Do not start any new medicine while taking QUILLIVANT XR without talking to your health care provider first.

How should QUILLIVANT XR be taken?

- **Read the step-by-step instructions for using QUILLIVANT XR extended-release suspension at the end of this Medication Guide.**
- Take QUILLIVANT XR exactly as prescribed. Your health care provider may adjust the dose, if needed, until it is right for you or your child. During dose adjustment, you or your child may still have ADHD symptoms.
- QUILLIVANT XR should be used with the oral dosing dispenser provided with the product. If the oral dosing dispenser is missing or not provided, please contact your pharmacist for a replacement.
- Check and make sure that the QUILLIVANT XR bottle contains liquid medicine. If QUILLIVANT XR is in powder form, do not use it. Return it to your pharmacist.
- Check and make sure that the bottle adapter was fully inserted into the bottle by the pharmacist. If the bottle adapter is not fully inserted, insert the adapter into the bottle.
- Take QUILLIVANT XR 1 time each day in the morning. QUILLIVANT XR is an extended-release suspension. It releases medicine into your body throughout the day.
- QUILLIVANT XR can be taken with or without food. Taking QUILLIVANT XR with food may shorten the time it takes for the medicine to start working.
- From time to time, your health care provider may stop QUILLIVANT XR treatment for a while to check ADHD symptoms.
- Your health care provider may do regular checks of the blood, heart, and blood pressure while taking QUILLIVANT XR.
- Children should have their height and weight checked often while taking QUILLIVANT XR. QUILLIVANT XR treatment may be stopped if a problem is found during these check-ups.
- In case of poisoning call your poison control center at 1-800-222-1222 right away, or go to the nearest hospital emergency room.
- If a dose is missed, you or your child should talk to your health care provider about dosing.

What should I avoid while taking QUILLIVANT XR?

- QUILLIVANT XR should not be taken with MAOI medicines. Do not start taking QUILLIVANT XR if you stopped taking an MAOI in the last 14 days. Do not drink alcohol while taking QUILLIVANT XR. This may cause a faster release of your methylphenidate dose.

What are the possible side effects of QUILLIVANT XR?**QUILLIVANT XR may cause serious side effects, including:**

- See “What is the most important information I should know about QUILLIVANT XR?” for information on reported heart and mental problems.

Other serious side effects include:

- painful and prolonged erections (priapism) have occurred with methylphenidate. If you or your child develop priapism seek medical help right away. **Because priapism can cause long lasting damage, it should be checked by a health care provider right away.**
- slowing of growth (height and weight) in children.

The most common side effects of QUILLIVANT XR include:

• decreased appetite	• indigestion	• dizziness	• increased blood pressure
• trouble sleeping	• stomach pain	• irritability	
• nausea	• weight loss	• mood swings	
• vomiting	• anxiety	• fast heartbeat	

These are not all the possible side effects of QUILLIVANT XR.

Call your health care provider for medical advice about side effects. You may report side effects to FDA at 1-800-FDA-1088.

How should I store QUILLIVANT XR?

- Store QUILLIVANT XR in a safe place at 59°F to 86°F (15°C to 30°C).
- **Keep QUILLIVANT XR and all medicines out of the reach of children.**

General information about the safe and effective use of QUILLIVANT XR

Medicines are sometimes prescribed for purposes other than those listed in a Medication Guide. Do not use QUILLIVANT XR for a condition for which it was not prescribed. Do not give QUILLIVANT XR to other people, even if they have the same condition. It may harm them.

You can ask your pharmacist or health care provider for information about QUILLIVANT XR that was written for health care professionals.

What are the ingredients in QUILLIVANT XR?

Active Ingredient: methylphenidate hydrochloride

Inactive Ingredients: sodium polystyrene sulfonate, povidone, triacetin, polyvinyl acetate, sucrose, anhydrous trisodium citrate, anhydrous citric acid, sodium benzoate, sucralose, poloxamer 188, corn starch, xanthan gum, talc, banana flavor, and silicon dioxide.

For more information, go to www.quillivantxr.com or call 1-800-438-1985.

This Medication Guide has been approved by the U.S. Food and Drug Administration.

This product's label may have been updated. For current full prescribing information, please visit www.pfizer.com.



Distributed by

NextWave Pharmaceuticals, Inc

A subsidiary of Pfizer Inc, New York, NY 10017

LAB-0657-8.0

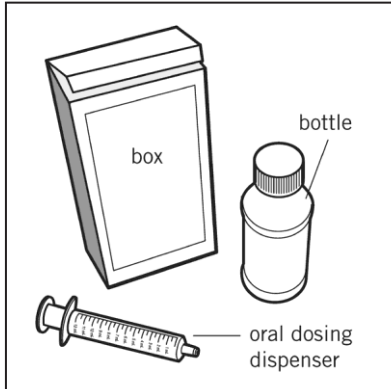
Revised June 2017

Instructions for Use
QUILLIVANT XR® (kwil-ə-vantl)
(methylphenidate hydrochloride)
for extended-release oral suspension CII

Read this Instructions for Use before using QUILLIVANT XR and each time you get a refill. There may be new information. This leaflet does not take the place of talking with the health care provider about your or your child's medical condition or treatment.

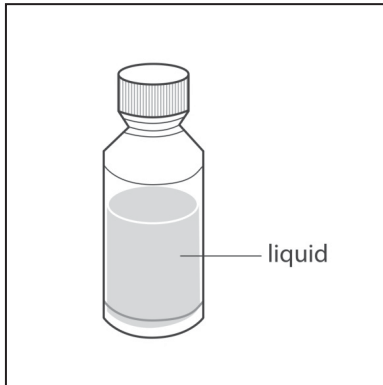
Step 1. Remove the QUILLIVANT XR bottle and oral dosing dispenser from the box (**See Figure A**). If the oral dosing dispenser is missing or not provided, please contact your pharmacist for a replacement.

Figure A



Step 2. Check and make sure that the QUILLIVANT XR bottle contains liquid medicine (**See Figure B**). If QUILLIVANT XR is still in powder form, **do not use it**. Return it to your pharmacist.

Figure B



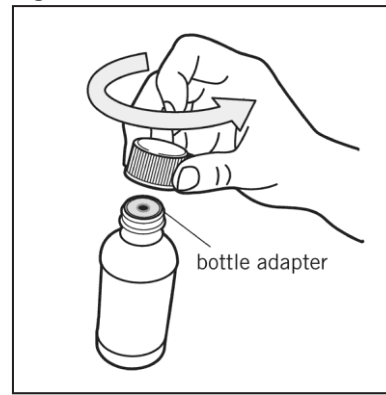
Step 3. Shake the bottle well (up and down) for at least 10 seconds before each use (**See Figure C**).

Figure C



Step 4. Uncap the bottle and check that the bottle adapter has been fully inserted into the bottle (**See Figure D**).

Figure D



Step 4 (continued). If bottle adapter (**See Figure E**) has not been inserted by the pharmacist into the bottle, insert adapter into the bottle as shown (**See Figure F and Figure G**).

Figure E

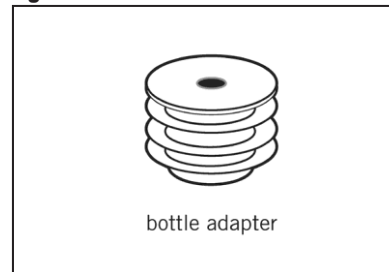
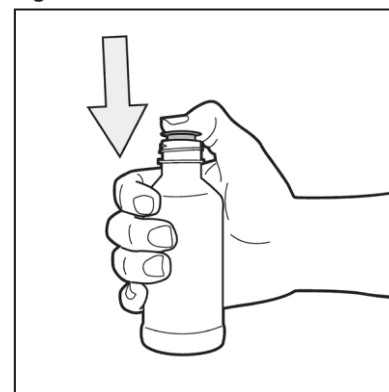


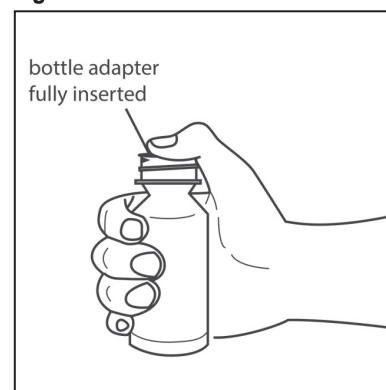
Figure F



After the bottle adapter has been fully inserted into the bottle (**See Figure G**), it should not be removed. If the bottle adapter has not been inserted and is missing from the box, contact your pharmacist.

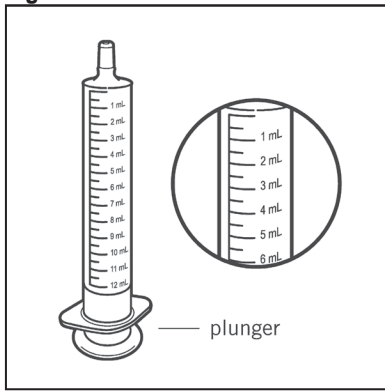
The bottle adapter must be fully inserted and should be even with the mouth of the bottle and must remain in place to allow the child resistant cap to work the right way.

Figure G



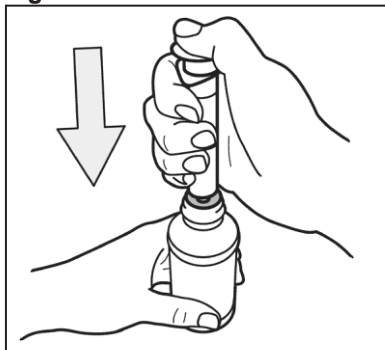
Step 5. Check the QUILLIVANT XR dose in milliliters (mL) as prescribed by your health care provider. Locate this number on the oral dosing dispenser (See Figure H).

Figure H



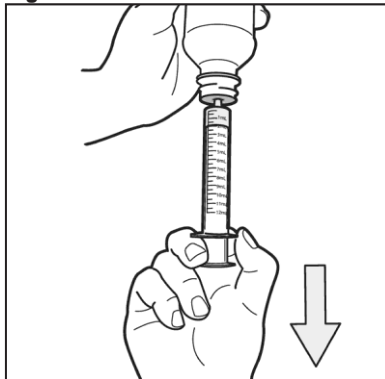
Step 6. Insert tip of the oral dosing dispenser into the upright bottle and push the plunger all the way down (See Figure I).

Figure I



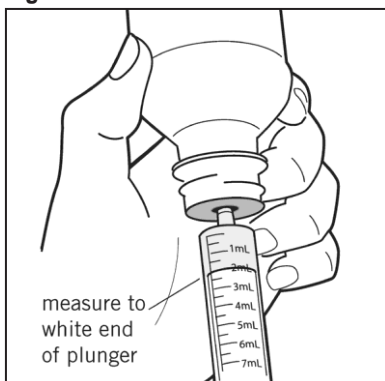
Step 7. With the oral dosing dispenser in place, turn the bottle upside down. Pull the plunger to the number of mL you need (the amount of liquid medicine in Step 5 – See Figure J).

Figure J



Step 7 (continued). Measure the number of mL of medicine from the white end of the plunger (See Figure K).

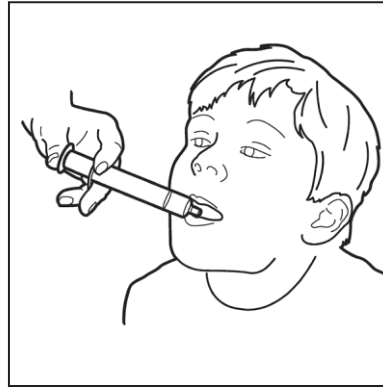
Figure K



Step 8. Remove the oral dosing dispenser from the bottle adapter.

Step 9. Slowly squirt QUILLIVANT XR directly into your or your child's mouth (See Figure L).

Figure L



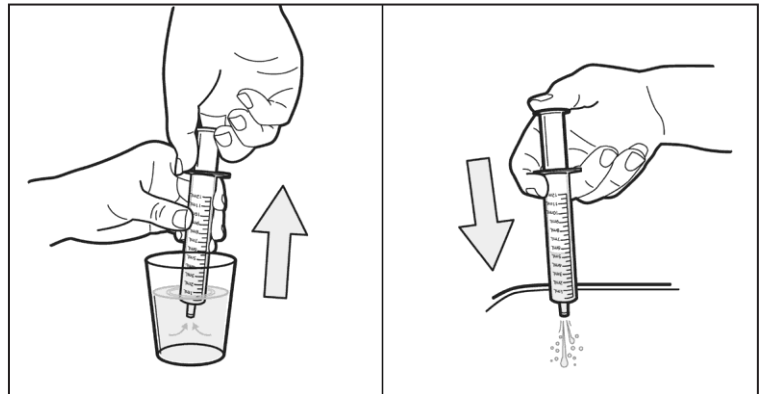
Step 10. Cap the bottle tightly. Store the bottle upright at 59°F to 86°F (15°C to 30°C) (See Figure M).

Figure M



Step 11. Clean the oral dosing dispenser after each use by placing in the dishwasher, or by rinsing with tap water (See Figure N).

Figure N



These Instructions for Use have been approved by the U.S. Food and Drug Administration.

This product's label may have been updated. For current full prescribing information, please visit www.pfizer.com.

 Distributed by
NextWave Pharmaceuticals, Inc
A subsidiary of Pfizer Inc, New York, NY 10017

LAB-0658-5.0
Revised: June 2017